

## Company Announcement

When a company announces a recall, market withdrawal, or safety alert, the FDA posts the company's announcement as a public service. FDA does not endorse either the product or the company.

# Choice Farms LLC Recalls Very Limited Quantity of Mushrooms Stuffed with Cheese Supplied by a Third Party that may have the potential for *Listeria monocytogenes* Contamination

For Immediate Release

February 13, 2017

## Contact

## Consumers

☎ 1-800-605-0881

## Announcement

[View Product Photos](#)

Choice Farms LLC is initiating a very limited voluntary recall of stuffed mushrooms because the mushrooms may contain a cheese component which a third party supplier advised has the potential to be contaminated with *Listeria monocytogenes*, an organism which can cause serious and sometimes fatal infections in young children, frail or elderly people, and others with weakened immune systems. Although healthy individuals may suffer only short-term symptoms such as high fever, severe headache, stuffiness, nausea, abdominal pain and diarrhea, *Listeria* infection can cause miscarriages and stillbirths among pregnant women.

The recall pertains to a total of seven (six in Texas, one in Kansas) individual shrink-wrapped trays of one of three stuffed mushroom types: Traditional Gourmet Portabella Mushrooms; Pizza Style Portabella Mushrooms; and/or Stuffed Mushrooms sold on Friday, February 10, 2017 at the following stores:

Store #	Location
Kroger 445	5330 S. Cooper/ Green Oaks Arlington, TX 76017
Kroger 461	5190 Hwy. 78 Sachse, TX 75048

Store #	Location
Kroger 529	4241 Capitol Avenue Dallas, TX 75204
Kroger 566	3205 University Drive Nacadoches, TX 75965
Kroger 575	2935 Ridge Road Rockwall, TX 75032
Kroger 695	5701 W. Pleasant Ridge Arlington, TX 76016
Dillon 072	10515 W. Central Ave. Wichita, KS 67212

No illnesses have been reported to date. This product is meant to be cooked and has instructions to do so on each package.

The consumers who suspect that they have purchased the products affected by this recall should dispose it in the garbage and contact Choice Farms LLC for a refund. Consumers with questions may contact the consumer 24-hour telephone number for Choice Farms LLC: 800-605-0881.

Product Description	Best if Enjoyed By	Lot Number	UPC
Traditional Gourmet Portabella Mushrooms (2 count tray, 8 oz.)	2/16/2017	12041000	7-17524-72470
Pizza style Portabella Mushrooms (2 count tray, 8 oz.)	2/16/2017	12041000	7-17524-72471
Stuffed Mushrooms (6 count tray, 7 oz.)	2/16/2017	12041000	7-17524-72469

###

#### Follow FDA

-  **Follow @US\_FDA** ([https://twitter.com/US\\_FDA](https://twitter.com/US_FDA))   
([/AboutFDA/AboutThisWebsite/WebsitePolicies/Disclaimers/default.htm](https://www.fda.gov/oc/AboutFDA/AboutThisWebsite/WebsitePolicies/Disclaimers/default.htm))
-  **Follow FDA** (<https://www.facebook.com/FDA>)   
([/AboutFDA/AboutThisWebsite/WebsitePolicies/Disclaimers/default.htm](https://www.fda.gov/oc/AboutFDA/AboutThisWebsite/WebsitePolicies/Disclaimers/default.htm))
-  **Follow @FDArecalls** (<https://twitter.com/fdarecalls>)   
([/AboutFDA/AboutThisWebsite/WebsitePolicies/Disclaimers/default.htm](https://www.fda.gov/oc/AboutFDA/AboutThisWebsite/WebsitePolicies/Disclaimers/default.htm))
-  **Recent Recalled Product Photos on FDA's Flickr Photostream**  
(<https://www.flickr.com/photos/fdaphotos/sets/72157663245186459/>)   
([/AboutFDA/AboutThisWebsite/WebsitePolicies/Disclaimers/default.htm](https://www.fda.gov/oc/AboutFDA/AboutThisWebsite/WebsitePolicies/Disclaimers/default.htm))

#### Product Photos

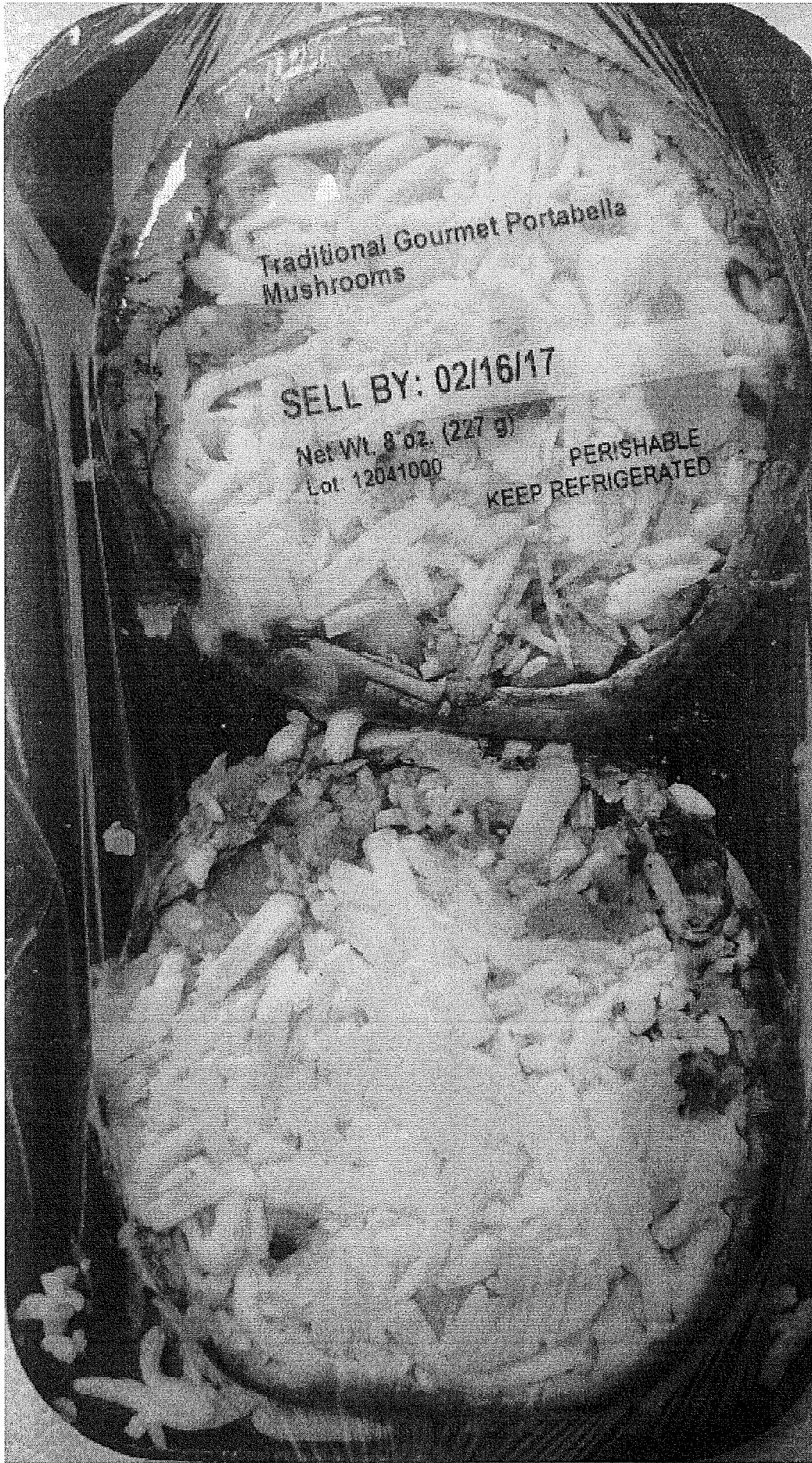
Traditional Gourmet Portabella  
Mushrooms

SELL BY: 02/16/17

Net Wt. 8 oz. (227 g)

Lot 12041000

PERISHABLE  
KEEP REFRIGERATED





# Traditional Gourmet Portabella Mushrooms

## COOKING INSTRUCTIONS:

Heat oven to 375°F degrees.  
Place mushrooms on baking  
sheet lightly sprayed with oil.  
Bake for 12-15 minutes until  
heated through and beginning  
to brown.

INGREDIENTS: PORTABELLA MUSHROOMS,  
ARTICHOKE HEARTS (ARTICHOKE HEARTS,  
WATER, SALT, CITRIC ACID), FIRE ROASTED  
SWEET RED BELL PEPPER (BELL PEPPERS,  
WATER, SEA SALT, CITRIC ACID), PARMESAN  
CHEESE (PASTEURIZED PART-SKIM MILK,  
CHEESE CULTURES, SALT, ENZYMES), AND  
POWDERED CELLULOSE (ANTI-CAKING  
AGENT), SPINACH, PANKO BREADCRUMBS  
(BLEACHED WHEAT FLOUR, DEXTROSE  
YEAST, SALT), YELLOW ONION, LOW  
MOISTURE MOZZARELLA CHEESE  
(PASTEURIZED MILK, CHEESE CULTURES,  
SALT, ENZYMES), POTATO STARCH, CORN  
STARCH, POWDERED CELLULOSE (TO  
PREVENT CAKING), NATAMYCIN (A NATURAL  
MOLD INHIBITOR), CRIMINI MUSHROOMS,  
WORCESTERSHIRE SAUCE (WATER,  
DISTILLED VINEGAR, SOY SAUCE (WATER,  
SALT, HYDROLYZED SOY PROTEIN, CORN  
SYRUP, CARAMEL COLOR, POTASSIUM  
SORBATE (PRESERVATIVE)), SUGAR, CORN  
SYRUP, TAMARIND EXTRACT, CARAMEL  
COLOR, SPICES, SALT, GARLIC, ONION,  
CITRIC ACID, XANTHAN GUM, NATURAL  
FLAVORS, POTASSIUM SORBATE (A  
PRESERVATIVE), DEHYDRATED GARLIC,  
MONTEREY JACK AND AMERICAN CHEESE  
CULTURED MILK, CREAM, JALAPENO  
PEPPERS, RED BELL PEPPERS, SALT,  
SODIUM PHOSPHATE, WATER, POWDERED  
CELLULOSE ADDED TO PREVENT CAKING,  
LACTIC ACID, SORBIC ACID (PRESERVATIVE),  
ARTIFICIAL COLOR, ENZYMES, SHERRY WINE  
(SHERRY WINE, SALT, POTASSIUM SORBATE  
(AS A PRESERVATIVE), POTASSIUM  
METABISULFITE (TO PROTECT COLOR),  
GARLIC, PARSLEY, BASIL, SAUSAGE, BLACK  
PEPPER

CONTAINS MILK, WHEAT, SOY

Choice Farms  
LLC, P.O.  
149222 Coral  
Gables, FL  
33114-9222

## Nutrition Facts

Serving Size 1 oz (55g)  
Servings Per Container About 7

Amount Per Serving

Calories 110 Calories from Fat 5

% Daily Value

Total Fat 0g 0%

Saturated Fat 0g 0%

Trans Fat 0g

Cholesterol 0mg 0%

Sodium 30mg 1%

Total Carbohydrate 20g 7%

Dietary Fiber 4g 18%

Sugars 3g

Protein 0g

Vitamin A 70% • Vitamin C 10%

Calcium 4% • Iron 10%

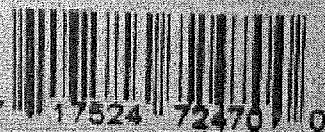
\*Percent Daily Values are based on a diet of other people's secrets.  
Your daily values may be higher or lower  
depending on your eating habits.

	Calories	2,000	2,500
Total Fat	Less than	80g	80g
Saturated Fat	Less than	20g	20g
Cholesterol	Less than	300mg	300mg
Sodium	Less than	2,400mg	2,400mg
Total Carbohydrate	Less than	30g	37g
Dietary Fiber	Less than	26g	26g

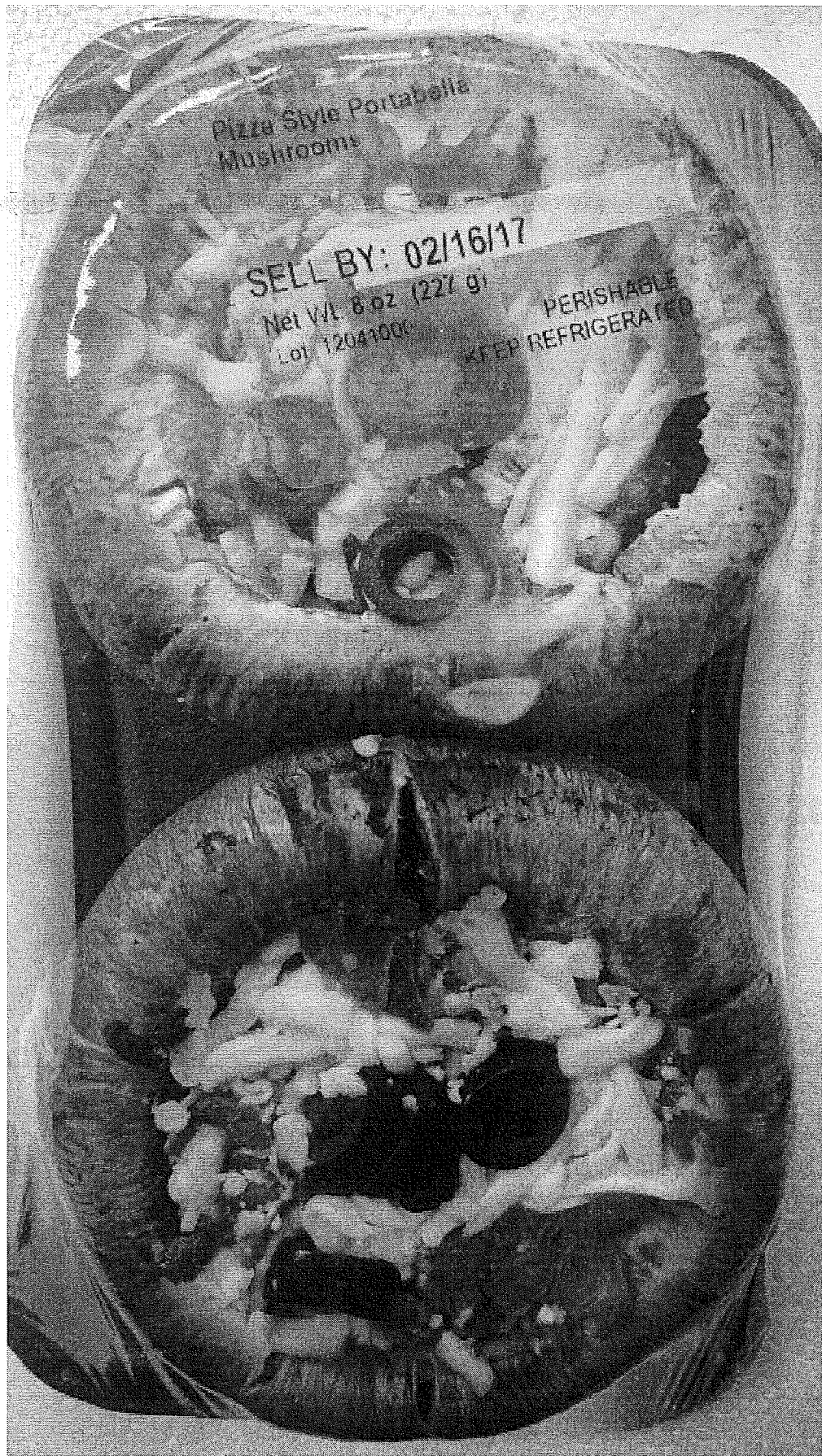
Calories per gram

Fat 9 • Carbohydrate 4 • Protein 4

Container not  
intended for use in  
microwave or  
conventional oven.  
Please remove  
product from tray  
prior to cooking.



DN133





## Pizza Style Portabella Mushrooms

### COOKING INSTRUCTIONS

Heat oven to 375°F degrees.  
Place mushrooms on baking  
sheet lightly sprayed with oil.  
Bake for 12-15 minutes until  
heated through and beginning  
to brown.

INGREDIENTS: PORTABELLA  
MUSHROOMS, LOW MOISTURE  
LOW MOISTURE MOZZARELLA  
CHEESE (PASTEURIZED MILK  
CHEESE CULTURES, SALT,  
ENZYMES), POTATO STARCH,  
CORN STARCH, POWDERED  
CELLULOSE (TO PREVENT  
CAKING), NATAMYCIN (A  
NATURAL MOLD INHIBITOR),  
TOMATOES, YELLOW ONION,  
MONTEREY JACK AND  
AMERICAN CHEESE CULTURED  
MILK, CREAM, JALAPENO  
PEPPERS, RED BELL PEPPERS,  
SALT, SODIUM PHOSPHATE,  
WATER, POWDERED  
CELLULOSE ADDED TO  
PREVENT CAKING, LACTIC  
ACID, SORBIC ACID  
(PRESERVATIVE), ARTIFICIAL  
COLOR, ENZYMES, SLICED RIPE  
OLIVES (RIPE OLIVES, WATER,  
SALT, FERROUS GLUCONATE  
(TO STABILIZE COLOR)),  
TOMATO PASTE (TOMATOES),  
JALAPENO PEPPER, CILANTRO,  
PARSLEY, ITALIAN SEASONING  
(SPICES).

CONTAINS MILK

Choice Farms  
LLC, P.O.  
149222 Coral  
Gables, FL  
33114-9222

### Nutrition Facts

Serving Size 3 oz (85g)  
Servings Per Container About 7

Amount Per Serving

Calories 110	Calories from Fat 5
% Daily Value*	
Total Fat 0g	0%
Saturated Fat 0g	0%
Trans Fat 0g	
Cholesterol 0mg	0%
Sodium 30mg	1%
Total Carbohydrate 20g	7%
Dietary Fiber 4g	16%
Sugars 3g	

Protein 6g

Vitamin A 70% • Vitamin C 10%

Calcium 4% • Iron 10%

\*Percent Daily Values are based on a diet of other people's secrets.  
Your daily values may be higher or lower  
depending on your calorie needs.

	Calories	2,000	2,500
Total Fat	Less than	65g	80g
Saturated Fat	Less than	30g	35g
Cholesterol	Less than	300mg	300mg
Sodium	Less than	2,400mg	2,400mg
Total Carbohydrate	Less than	300g	375g
Dietary Fiber	Less than	25g	30g

Calories per gram:

Fat 9 • Carbohydrate 4 • Protein 4

Container not  
intended for use in  
microwave or  
conventional  
oven. Please  
remove product  
from tray prior to  
cooking.



7 17524 72471 7

DM133

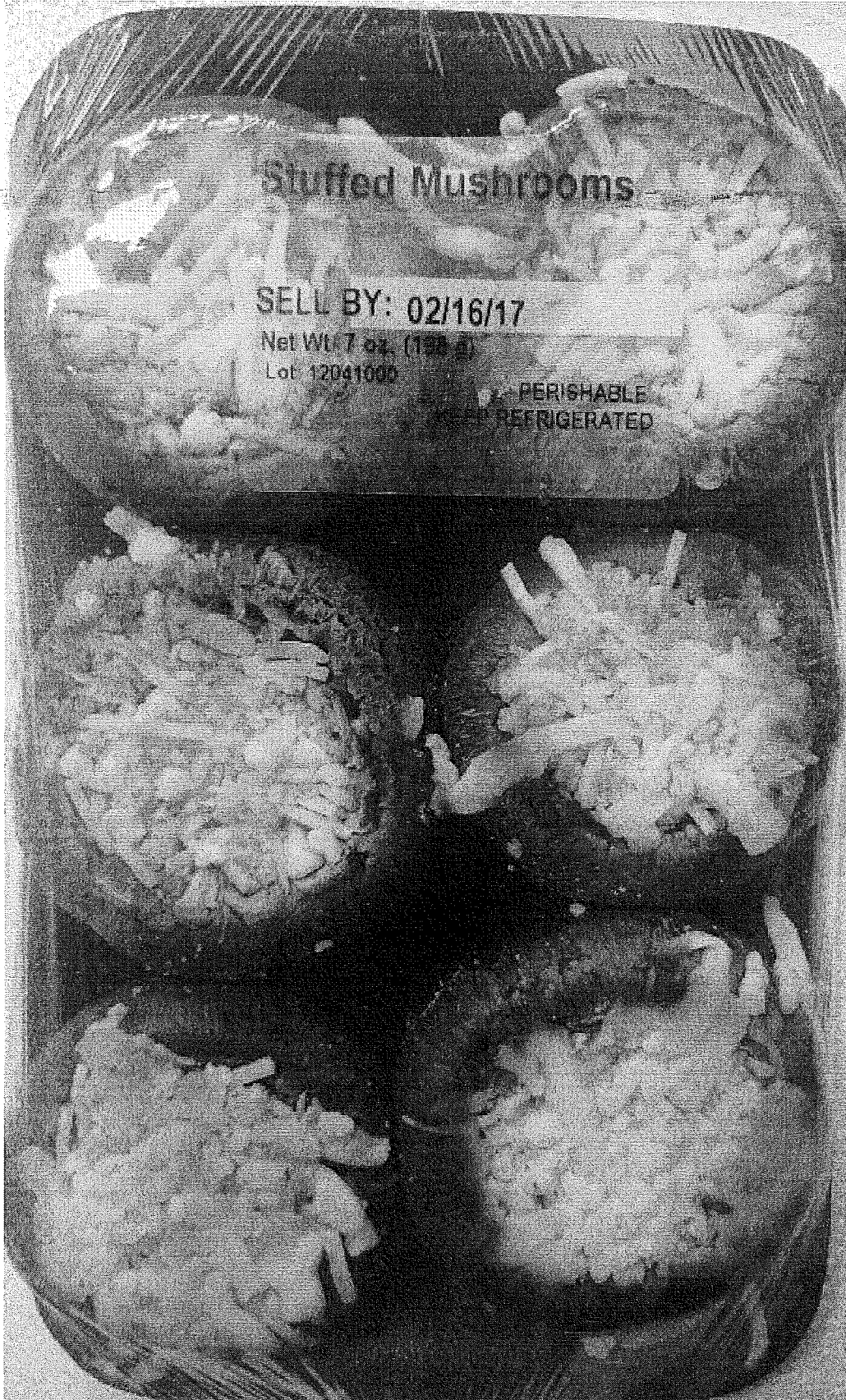
Stuffed Mushrooms

SELL BY: 02/16/17

Net Wt 7 oz. (198 g)

Lot: 12041000

PERISHABLE  
REFRIGERATED





## Stuffed Mushrooms

### COOKING INSTRUCTIONS

Heat oven to 350°F degrees.  
Place mushrooms on baking sheet lightly sprayed with oil.  
Bake for 10-12 minutes until heated through and beginning to brown.

VEGETABLE INGREDIENTS: MUSHROOMS (MAY CONTAIN CRIMINI MUSHROOMS OR WHITE MUSHROOMS), CHEESE INGREDIENTS: LOW MOISTURE MOZZARELLA CHEESE (PASTEURIZED MILK, CHEESE CULTURES, SALT, ENZYMES), POTATO STARCH, CORN STARCH, POWDERED CELLULOSE (TO PREVENT CAKING), NATAMYCIN (A NATURAL MOLD INHIBITOR), STUFFING INGREDIENTS: PANKO BREADCRUMBS (BLEACHED WHEAT FLOUR, DEXTROSE, YEAST, SALT), YELLOW ONION, PARMESAN CHEESE (PASTEURIZED PART-SKIM MILK, CHEESE CULTURES, SALT, ENZYMES), AND POWDERED CELLULOSE (ANTI-CAKING AGENT), WORCESTERSHIRE SAUCE, WATER, DISTILLED VINEGAR, SOY SAUCE, WATER, SALT, HYDROLYZED SOY PROTEIN, CORN SYRUP, CARAMEL COLOR, POTASSIUM SORBATE (PRESERVATIVE), SUGAR, CORN SYRUP, TAMARIND EXTRACT, CARAMEL COLOR, SPICES, SALT, GARLIC, ONION, CITRIC ACID, XANTHAN GUM, NATURAL FLAVORS, POTASSIUM SORBATE (A PRESERVATIVE), DEHYDRATED MONTEREY JACK AND AMERICAN CHEESE CULTURED MILK CREAM, JALAPENO PEPPERS, RED BELL PEPPERS, SALT, SODIUM PHOSPHATE, WATER, POWDERED CELLULOSE ADDED TO PREVENT CAKING, LACTIC ACID, SORBIC ACID (PRESERVATIVE), ARTIFICIAL COLOR, ENZYMES, SHERRY WINE (SHERRY WINE, SALT, POTASSIUM SORBATE (AS A PRESERVATIVE), POTASSIUM METABISULFITE (TO PROTECT COLOR), GARLIC, PARSLEY, BASIL, SAGE, BLACK PEPPER.

CONTAINS MILK, WHEAT, SOY

Container not  
intended for  
use in  
microwave or  
conventional  
oven. Please  
remove product  
from tray prior  
to cooking.

### Nutrition Facts

Serving Size 3 oz. (85g)  
Servings Per Container About 7

Amount Per Serving

Calories 110 Calories from Fat 5

% Daily Value\*

Total Fat 0g 0%

Saturated Fat 0g 0%

Trans Fat 0g

Cholesterol 0mg 0%

Sodium 30mg 1%

Total Carbohydrate 20g 7%

Dietary Fiber 4g 18%

Sugars 3g

Protein 5g

Vitamin A 70% • Vitamin C 10%

Calcium 4% • Iron 10%

\*Percent Daily Values are based on a diet of other people's secrets. Your daily values may be higher or lower depending on your calorie needs:

	Calories	2,000	2,500
Total Fat	Less than	65g	80g
Saturated Fat	Less than	20g	25g
Cholesterol	Less than	300mg	300mg
Sodium	Less than	2,400mg	2,400mg
Total Carbohydrate	Less than	300g	370g
Dietary Fiber	Less than	20g	30g

Calories per gram:  
Fat 9 • Carbohydrate 4 • Protein 4

Choice Farms LLC  
P.O. 149222 Coral  
Gables, FL 33114-9222



DAW133

[More in Recalls, Market Withdrawals, & Safety Alerts](#)  
(/Safety/Recalls/default.htm)

[Archive for Recalls, Market Withdrawals & Safety Alerts](#) (/Safety/Recalls/ArchiveRecalls/default.htm) ▼

[Enforcement Reports](#) (/Safety/Recalls/EnforcementReports/default.htm) ▼

[Industry Guidance](#) (/Safety/Recalls/IndustryGuidance/default.htm)

[Major Product Recalls](#) (/Safety/Recalls/MajorProductRecalls/default.htm)