

## Company Announcement

When a company announces a recall, market withdrawal, or safety alert, the FDA posts the company's announcement as a public service. FDA does not endorse either the product or the company.

# MDS Foods Inc. - Food Safety Press Release

## For Immediate Release

February 11, 2017

## Contact

### Consumers

☎ (330) 879-9780 extension 105

## Announcement

[View Product Photos](#)

MDS Foods Inc., of Massillon, OH is recalling multiple products some of which were found to be contaminated with the bacteria *Listeria monocytogenes* and other products which may have the potential to be contaminated with the bacteria.

Deutsch Kase Haus, LLC of Middlebury, Indiana, supplied MDS Foods with Colby and Colby Jack minihorn cheeses that have been found to be contaminated with the pathogenic organism which can cause serious and sometimes fatal infections in young children, frail or elderly people, and others with weakened immune systems. Although healthy individuals may suffer only short-term symptoms such as high fever, severe headache, stiffness, nausea, abdominal pain and diarrhea, *Listeria* infection can cause miscarriages and stillbirths among pregnant women. At the time of this release, no illnesses have been reported.

Customers who have purchased any of the cheese products listed below from the affected sell by dates or any unreadable date codes are urged not to consume it and to return it to the place of purchase for a full refund. Consumers with questions may contact MDS Foods Customer Service: (330) 879-9780 extension 105 Monday through Friday, 8:00AM to 5:00PM, (EST).

MDS Foods, Inc. is committed to food safety and providing our customers with the highest quality products. MDS Foods, Inc. has also recalled potentially affected products that were packaged on the same production lines in our Tullahoma, TN. Facility as the affected product.

MDS Foods, Inc. is working diligently with the FDA and TN Department Agriculture as well as closely monitoring the information from our affected cheese supplier. We will continue to posts updates to this recall if more information becomes available.

Affected and potentially affected products were distributed by MDS Foods Inc. under multiple brand labels and

distributed nationwide. Please refer to the list below.

- Online -

<https://www.mdsfoods.com/single-post/021117Recall> (<https://www.mdsfoods.com/single-post/021117Recall>)

**Cheese products being recalled due to found contamination from cheese supplier**

MDS Foods Item #	Brand	Description	Product Size	Piece UPC Code	Case UPC Code	Date Code
55209	Amish Classics	Colby Deli (Mini) Horn	6 lb	8 28653 552093	00 8 28653 55209 3	Sell by: May 17, 2017
55241	Amish Classics	Colby RW Fullmoon	Approx. 8 oz	8 28653 55241 3	00 8 28653 55241 3	Best if used by: 07/10/17 7/4/2017 6/4/2017 5/19/2017
55245	Amish Classics	Colby EW Fullmoon	8 oz	8 28653 55245 1	00 8 28653 55245 1	Best if used by: 7/10/2017 7/4/2017 6/3/2017 5/19/2017
55831	Deli Readi	Colby Mini Cheese Slices	2 lb pack	6 34660 62859 7	00 6 34660 62859 7	Best if used by: 05/02/2017 4/22/2017
55553	Deli Made EZ	Colby Cheese Slices	1.5 lb pack	8 28653 55554 4	00 8 28653 55553 7	335-16
18755	Meijer	Colby Jack Mini Horn	6 lb	710917 18755	7 10917 18755	Sell by Date: 05/02/17
55755	Meijer	Colby Mini Horn	6 lb	710917 55755	7 10917 55755	Sell by Date: 05/02/17

**Cheese products being recalled due to potential contamination**

MDS Foods Item #	Brand	Description	Product Size	Piece UPC Code	Case UPC Code	Date Code
55244	Amish Classics	Colby RW Halfmoon	Approx. 8 oz	N/A	0 08 28653 55244 4	Best if used by: 07/10/2017

55758	Meijer	Colby EW Halfmoon	8 oz	7 13733 34047 2	0 07 13733 34047 2	Best if used by: 07/10/2017
18244	Amish Classics	Colby Jack RW Halfmoon	Approx. 8 oz	N/A	00828653182443	Best if used by: 07/10/2017
18758	Meijer	Colby Jack EW Halfmoon Chunk	8 oz	713733340588	00713733340588	Best if used by: 07/10/2017
18241	Amish Classics	Colby Jack RW Fullmoon	Approx. 8 oz	N/A	0 08 28653 18241 2	Best if used by: 07/10/2017
18245	Amish Classics	Colby Jack EW Fullmoon	8 oz	828653182450	00828653182450	Best if used by: 07/10/2017
28245	Amish Classics	Cheddar EW Fullmoon	8 oz	828653282457	00828653282457	Best if used by: 07/10/2017 07/04/2017
73705	Lipari Old Tyme	Swiss Sandwich Cut	Approx 8.5 lbs	N/A	00828653737056	Best if used by: 07/04/2017
10241	Amish Classics	Jalapeno RW Fullmoon	Approx. 8 oz	N/A	0 08 28653 10241 0	Best if used by: 07/04/2017
10245	Amish Classics	Jalapeno EW Fullmoon	8 oz	828653102458	00828653102458	Best if used by: 07/04/2017
18830	Deli Readi	Colby Jack St Pk 1oz Halfmoon Slice	1 lb	6 34660 62875 7	006 34660 62875 7	Best if used by: 05/02/2017
10831	Deli Readi	Jalapeno St Pk 1oz Slice	2 lb pack	6 34660 62878 8	0 06 34660 62878 8	Best if used by: 04/22/2017
26831	Deli Readi	Hot Pepper St Pk 1oz Slice	2 lb pack	6 34660 62868 9	0 06 34660 62868 9	Best if used by: 04/22/2017
26555	Deli Made EZ	Hot Pepper St Pk .5oz Slice	1.5 lb pack	8 28653 26555 9	0 08 28653 26555 9	Best if used by: 04/22/2017
28747	Duck Deli	Cheddar St Pk .75oz Slice	1.5 lb pack	8 28653 28747 6	0 08 28653 28747 6	Production Date: 358-16
28545	Deli Made EZ	Cheddar St Pk .75oz Slice	2.0 lb pack	8 28653 28545 8	0 08 28653 28545 8	Best if used by: 04/22/2017
28555	Deli Made EZ	Ched Mild Stk Pk .5oz Slice	1.5 lb pack	8 28653 28555 7	0 08 28653 28555 7	Best if used by: 04/22/2017

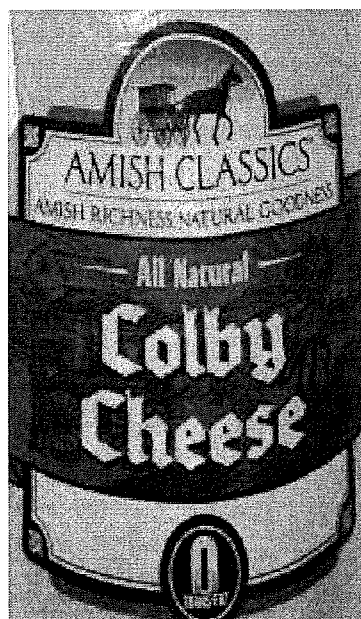
55830	Deli Readi	Colby St Pk 1oz Halfmoon Slices	1.0 lb pack	6 34660 62872 6	0 06 34660 62872 6	Best if used by: 04/22/2017
55703	Old Tyme	Colby EW Halfmoon	8 oz	0 94776 10227 3	0 00 41563 26105 7	Best if used by: 06/03/2017
10555	Deli Made EZ	Jalapeno Jack St Pk .5oz Slice	1.5 lb pack	8 28653 10555 8	0 08 28653 10555 8	Best if used by: 03/30/2017

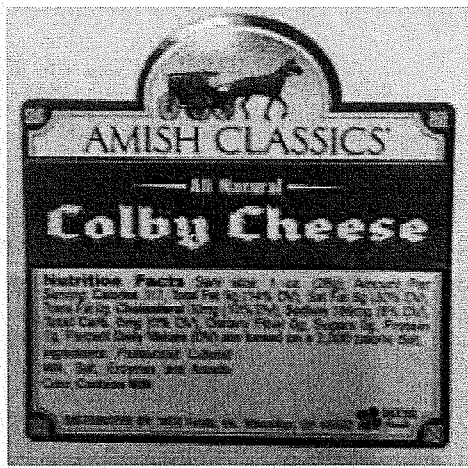
###

#### Follow FDA

-  **Follow @US\_FDA** ([https://twitter.com/US\\_FDA](https://twitter.com/US_FDA))   
([/AboutFDA/AboutThisWebsite/WebsitePolicies/Disclaimers/default.htm](https://www.fda.gov/oc/AboutFDA/AboutThisWebsite/WebsitePolicies/Disclaimers/default.htm))
-  **Follow FDA** (<https://www.facebook.com/FDA>)   
([/AboutFDA/AboutThisWebsite/WebsitePolicies/Disclaimers/default.htm](https://www.fda.gov/oc/AboutFDA/AboutThisWebsite/WebsitePolicies/Disclaimers/default.htm))
-  **Follow @FDArecalls** (<https://twitter.com/fdarecalls>)   
([/AboutFDA/AboutThisWebsite/WebsitePolicies/Disclaimers/default.htm](https://www.fda.gov/oc/AboutFDA/AboutThisWebsite/WebsitePolicies/Disclaimers/default.htm))
-  **Recent Recalled Product Photos on FDA's Flickr Photostream**  
(<https://www.flickr.com/photos/fdaphotos/sets/72157663245186459/>)   
([/AboutFDA/AboutThisWebsite/WebsitePolicies/Disclaimers/default.htm](https://www.fda.gov/oc/AboutFDA/AboutThisWebsite/WebsitePolicies/Disclaimers/default.htm))

#### Product Photos





**ITEM #:**  
**62859**

**8/2# RW Deli Readi Colby Mini Cheese Slices**

**NET WT. 16 LBS (7.26 kg)**

**USE BY: 04/22/2017**

Ingredients: Pasteurized part skim milk, cheese cultures, salt, annatto color, enzymes

**KEEP REFRIGERATED**

Distributed By:  
The Deli Source, Inc.  
Antioch, IL 60002

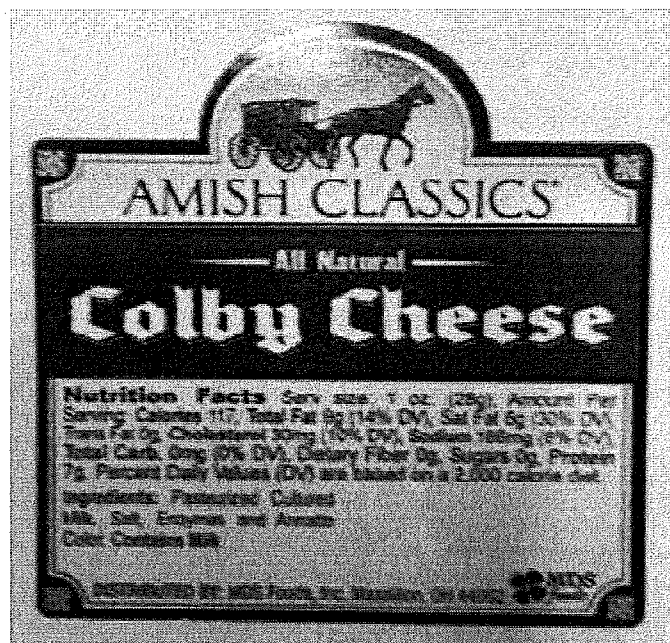
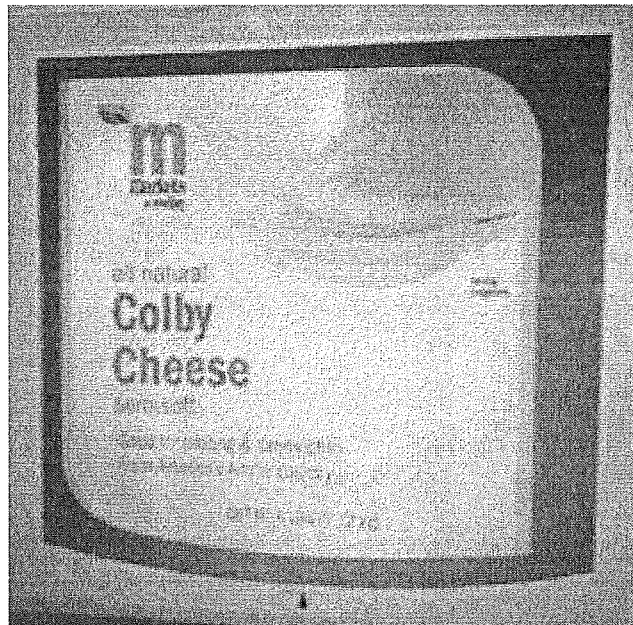
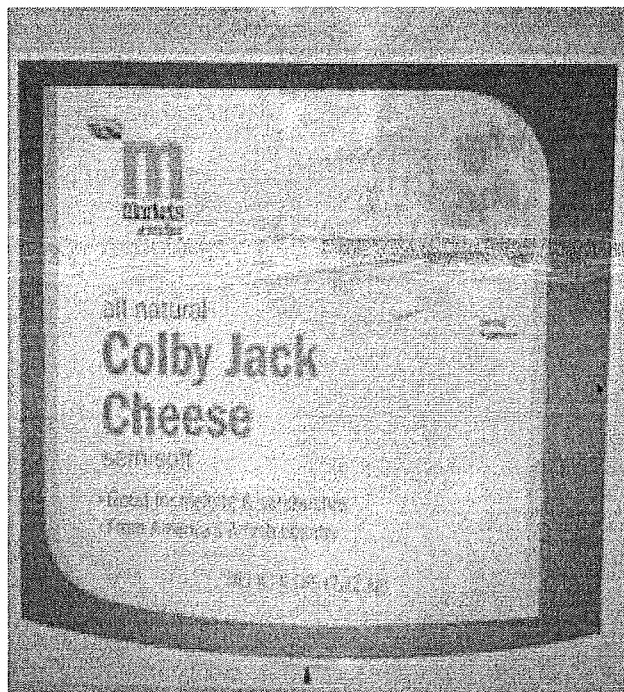
**AMISH CLASSICS**  
**Colby Cheese**

**Deli Made EZ® Slices**

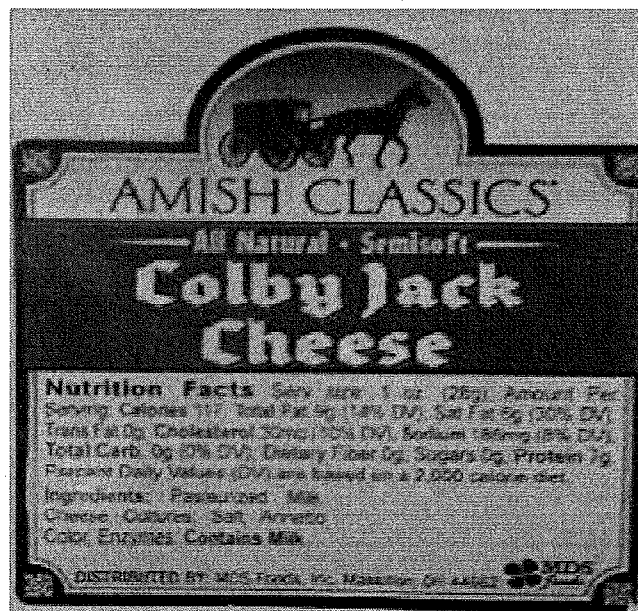
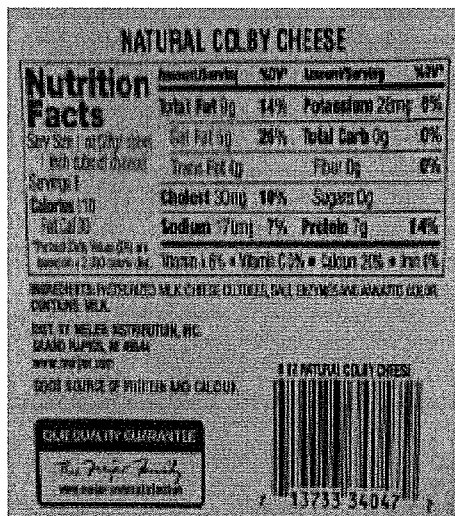
**NET WT. 15 LB (681g)**

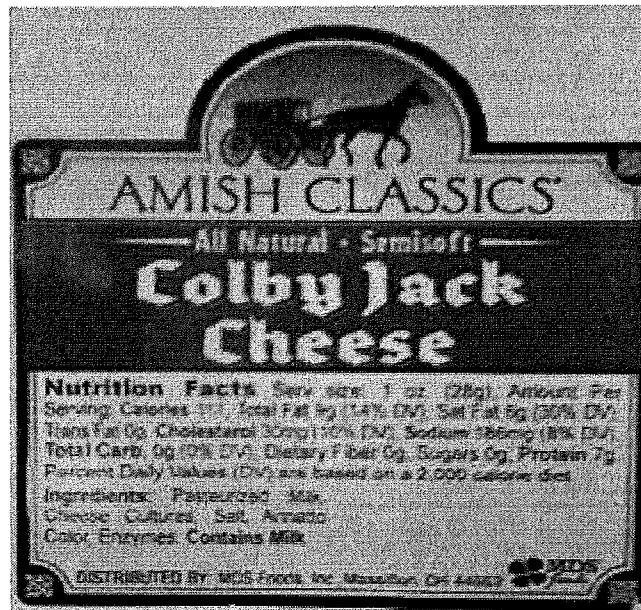
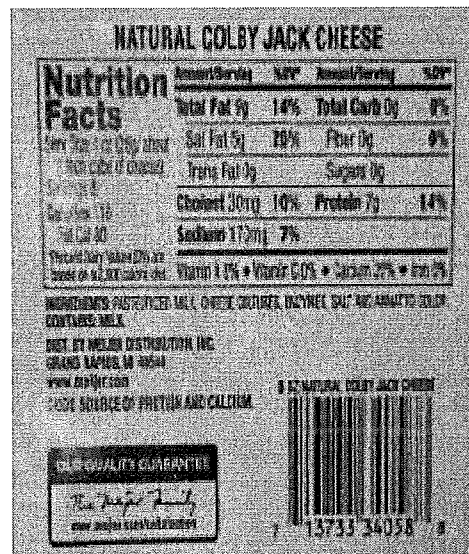
**Nutrition Facts** (per slice, 1 oz. (28g), Amount Per Serving)  
Serving Size: 1 oz. (28g) | Servings Per Container: 10  
Total Fat 14g | Total Fat 28% DV | Total Carb. 0g | Total Carb. 0% DV  
Sodium 170mg | Sodium 7% DV  
Total Fat 14g | Total Fat 28% DV | Total Carb. 0g | Total Carb. 0% DV  
Sodium 170mg | Sodium 7% DV  
Total Fat 14g | Total Fat 28% DV | Total Carb. 0g | Total Carb. 0% DV  
Sodium 170mg | Sodium 7% DV

**28633 55551**

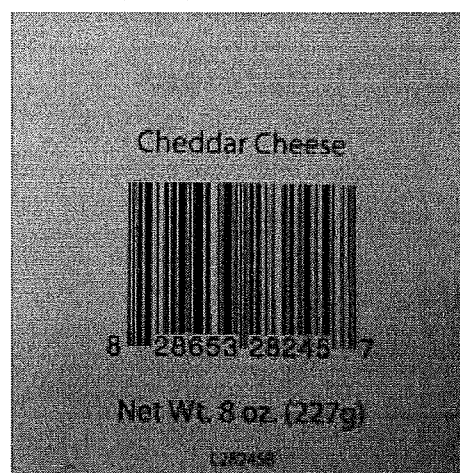
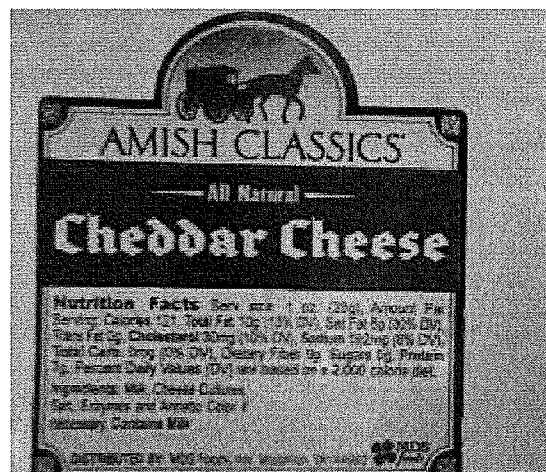
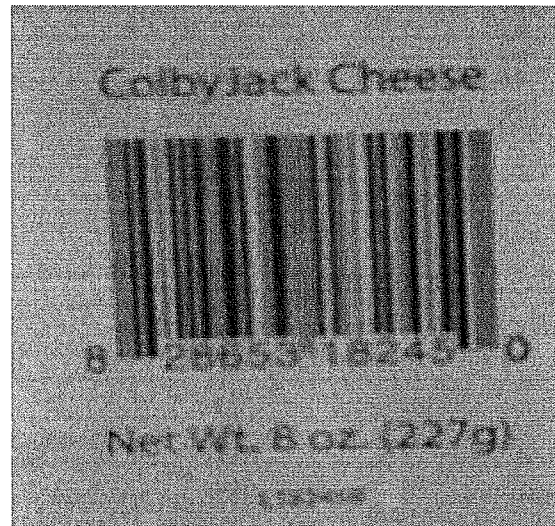
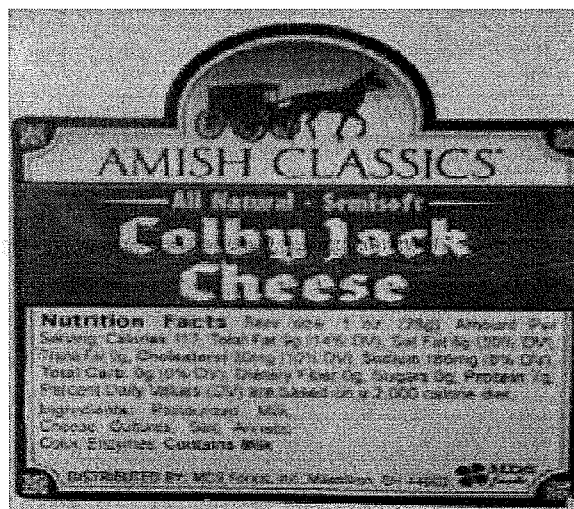


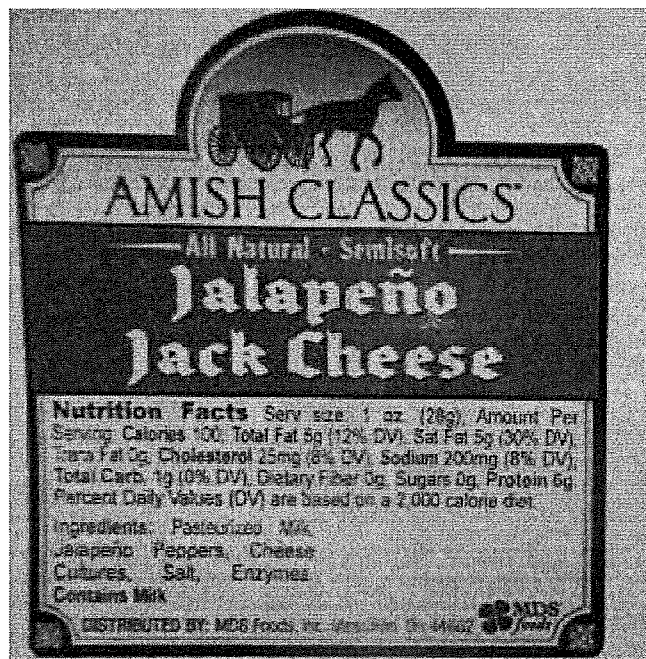
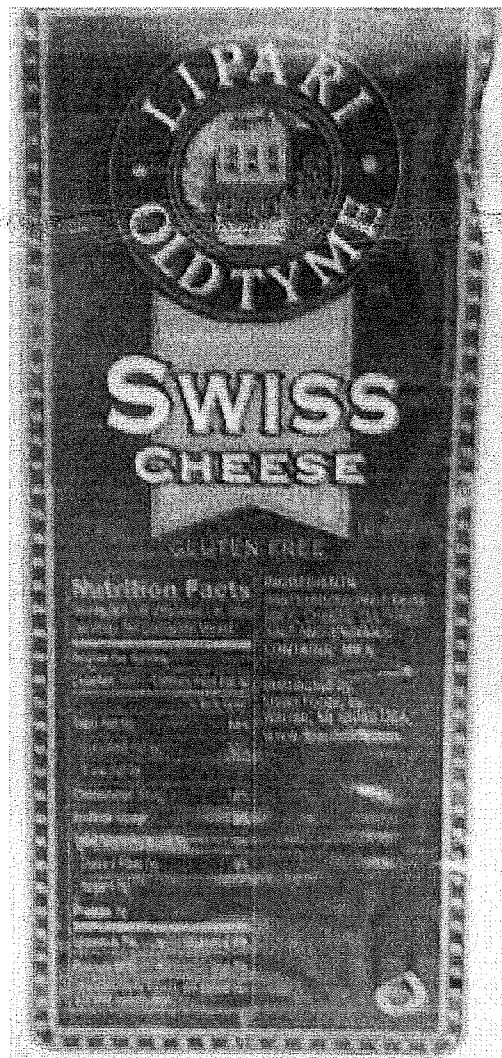


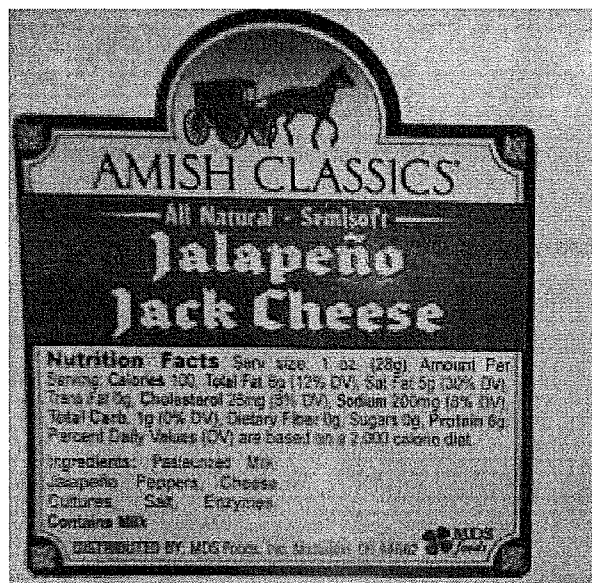












**More in Recalls, Market Withdrawals, & Safety Alerts**  
[\(/Safety/Recalls/default.htm\)](/Safety/Recalls/default.htm)

[Archive for Recalls, Market Withdrawals & Safety Alerts \(/Safety/Recalls/ArchiveRecalls/default.htm\)](/Safety/Recalls/ArchiveRecalls/default.htm)



[Industry Guidance \(/Safety/Recalls/IndustryGuidance/default.htm\)](/Safety/Recalls/IndustryGuidance/default.htm)

[Major Product Recalls \(/Safety/Recalls/MajorProductRecalls/default.htm\)](/Safety/Recalls/MajorProductRecalls/default.htm)