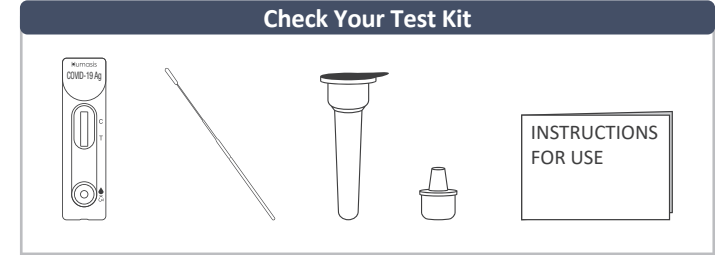




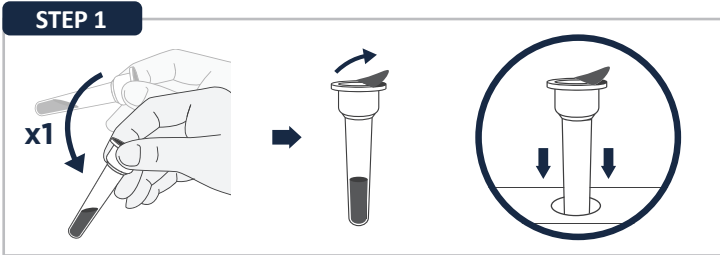
# COVID-19 Ag Home Test



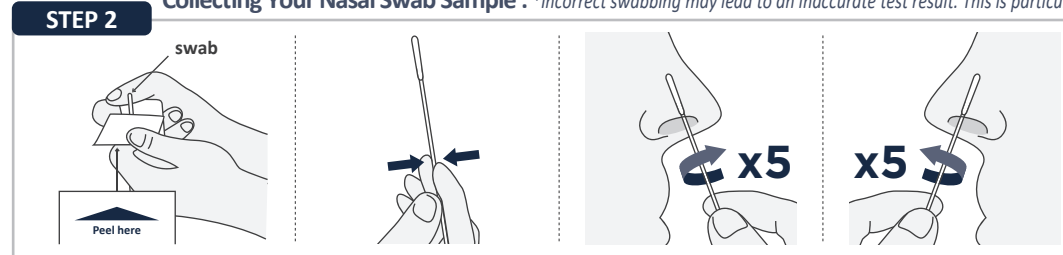
**Wash Your Hands**  
Before you start testing, wash your hands or use hand sanitizer. Make sure your hands are dry before starting.



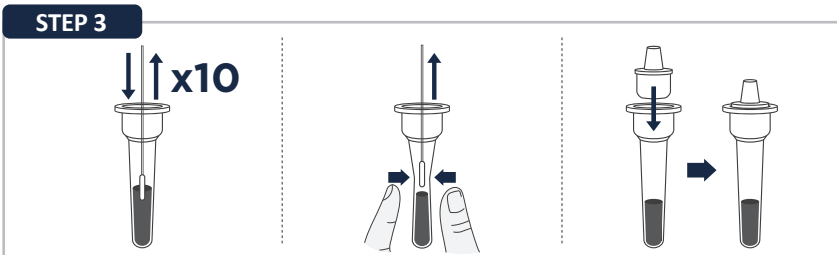
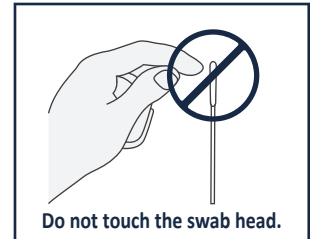
**Check Your Test Kit**  
**Locate the kit components :** It is recommended gloves (not provided) also be used during testing. Release the test tube and the test device from pouches and place those on a flat surface.



**STEP 1**  
Collect the buffer fluid at the bottom of the test tube by shaking it and then peel off the seal. keep the pre-filled tube in the tube holder.



**STEP 2** **Collecting Your Nasal Swab Sample :** \*Incorrect swabbing may lead to an inaccurate test result. This is particularly important if you do not have symptoms.  
Look for the "PEEL HERE" sign to peel open the swab package halfway. And hold the swab towards the end of 1/3 point. Insert the swab 1-2cm into one of the anterior nares. Rotate the swab against the nasal wall more than 5 times and withdraw. Repeat the other anterior nares using the same swab.



**STEP 3**  
Put the tip of the swab into the test tube and move the swab up and down more than 10 times. Remove the swab while pressing against the sides the tube to squeeze the liquid from the swab. Close the cap tightly.



**STEP 4**  
Dispense three drops into the well next to "▲ x 3"



**STEP 5**  
Start to read at 15~20 minutes. (Do not read after 15->20 minutes.)



**Disposal**  
All used test components should be disposed of in your household waste.



**Wash Your Hands**  
After completing all steps, wash hands or use hand sanitizer.

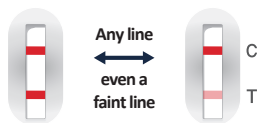
## Check Your Results

### NEGATIVE



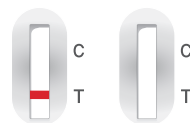
If there is **ONE LINE**, next to the "C" and **NO LINE** next to the "T", your test result is negative.

### POSITIVE



If there is **TWO LINES**, next to the "C" and any line next to the "T" **even a faint one**, you may be infected with COVID-19.

### INVALID



If there is **NO LINE** next to the "C" like above examples, your test is not working. Please contact the place of purchase.



## Humasis Co., Ltd.

Rm. 114, 502, 504, 604, 604-1, B03-1, B03-2,  
88, Jeonpa-ro, Dongan-gu, Anyang-si,  
Gyeonggi-do, 14042, Republic of Korea  
TEL:+82-31-478-8597, FAX:+82-31-478-8586  
Email:question@humasis.com  
www.humasis.com



## MT Promedt Consulting GmbH

Altenhofstr. 80  
D-66386 St. Ingbert / Germany  
TEL: +49 6894 - 58 10 20  
FAX: +49 6894 - 58 10 21  
Email: info@mt-procons.com  
www.mt-procons.com

