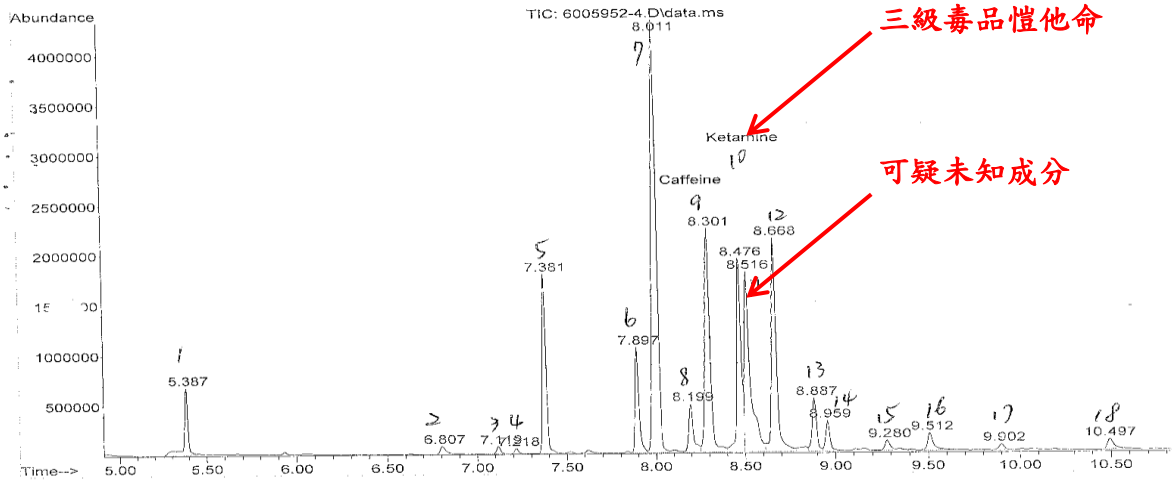




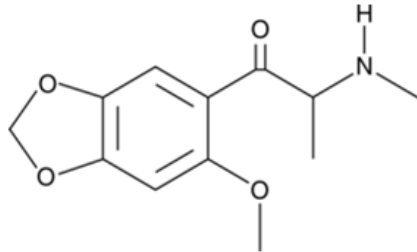
圖一、咖啡包檢體

File : D:\Hsiang\20150210\6005952-4.D
 Operator : HSIANG
 Acquired : 10 Feb 2015 17:01 using AcqMethod CSG.M
 Instrument : 5973N #5
 Sample Name: 6005952-4
 Misc Info :
 Vial Number: 44

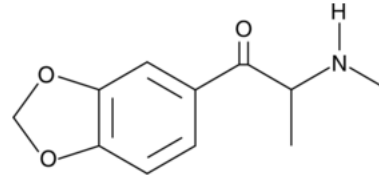


圖二、以氣相層析質譜法分析咖啡包檢體

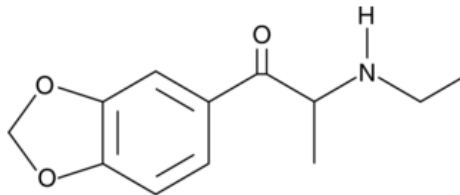
105 年首次檢出新興濫用藥物



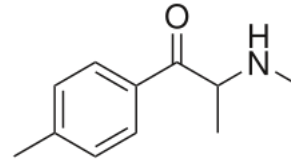
6-methoxy Methylone



Methylone

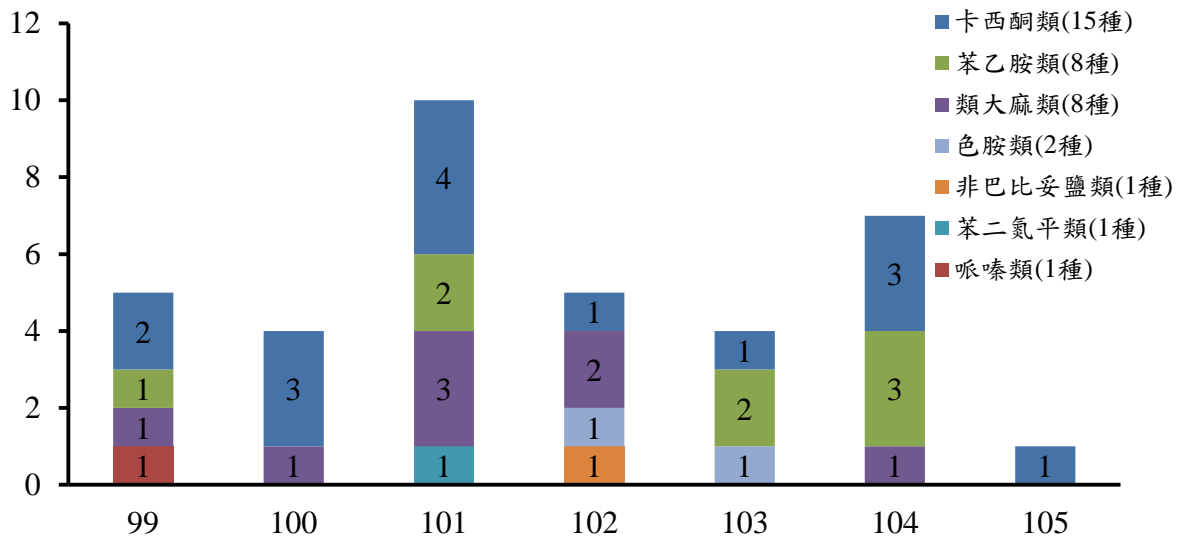


Ethylone



Mephedrone (喵喵)

圖三、6-methoxy Methylone 及常見濫用藥物成分結構



圖四、食藥署於 99 年至 105 年 8 月首次檢出新興濫用藥物成分種類數