



Ministry of Food and
Drug Safety

Safety Control Policy for Imported Foods in Korea

Nov. 29. 2017

Contents

Order

- **Introduction of MFDS**
- **Inspection of Imported Foods**
- **Major provisions of Special Act on Imported Food Safety Control**

MFDS : Competent Authority

History

Ministry of Food and Drug Safety

- ✓ Raised up the ministerial level in March, 2013
- ✓ Fully exercise the programs given by the Acts
- ✓ As a control tower of food safety control including Meats, Fish and those products

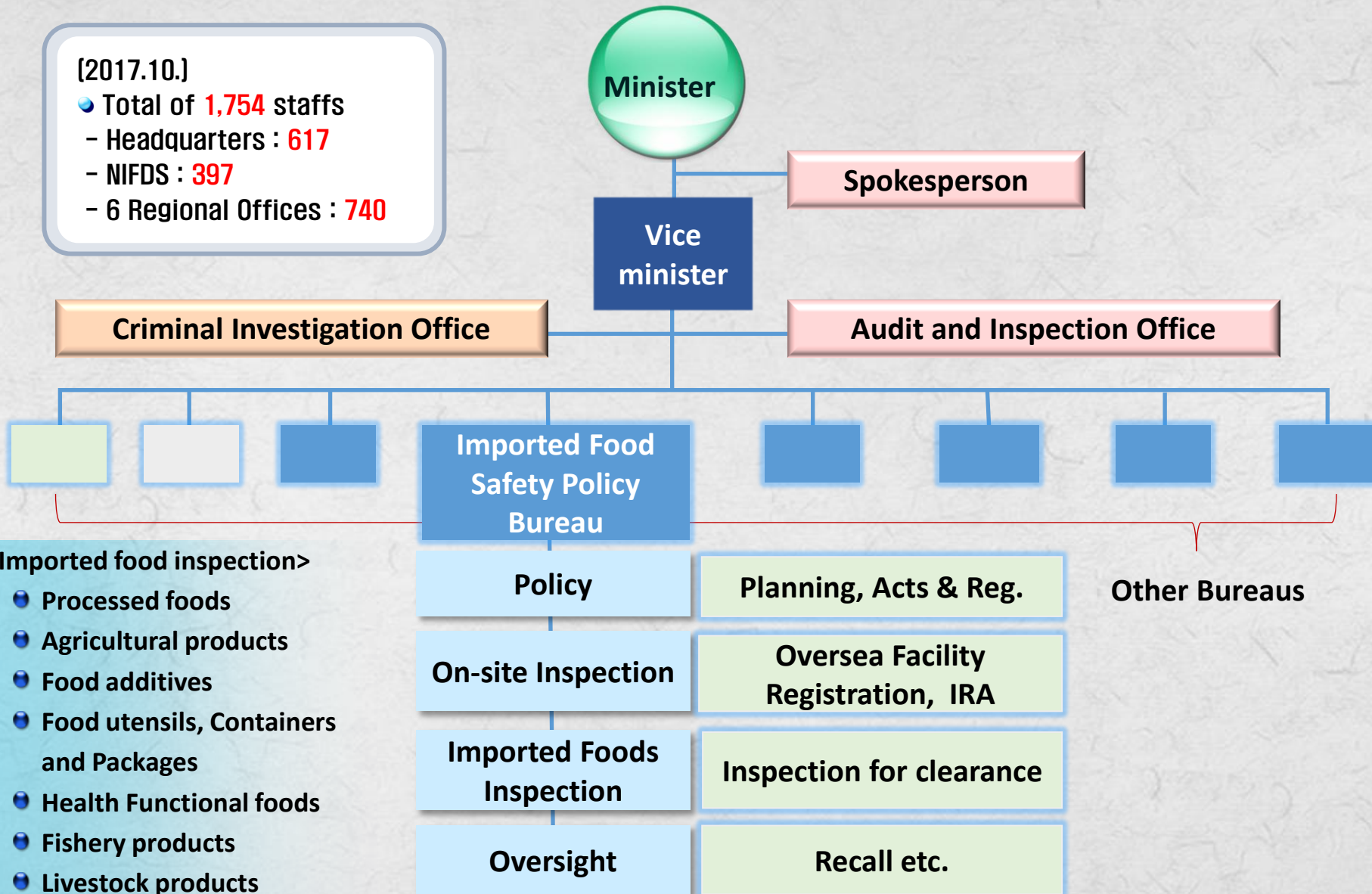
Imported Food Safety Policy Bureau

- ✓ Established the Bureau in March 2017

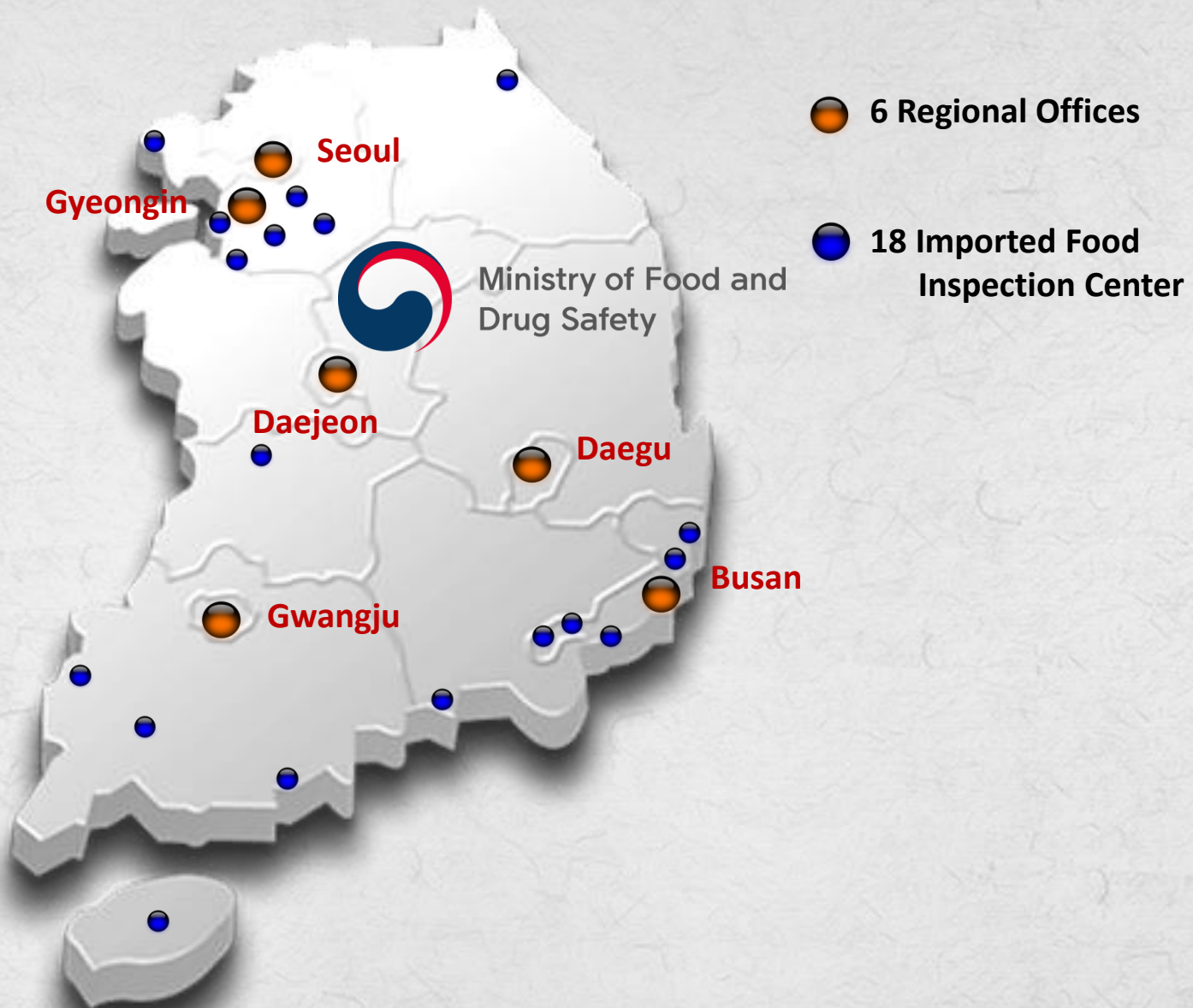
Organization

[2017.10.]

- Total of **1,754** staffs
 - Headquarters : **617**
 - NIFDS : **397**
 - 6 Regional Offices : **740**



MFDS & Regional Offices



Homepages

MFDS main homepage(Korean): <http://www.mfds.go.kr/index.do>

MFDS main homepage(English): <http://www.mfds.go.kr/eng/index.do>

식품의약품안전처 *국민의 안전을 위하여*

홈 | 이메일구독 | 이용안내 | 사이트맵 | ENGLISH | 모바일

통합검색

정보공개 | 국민소통 | 알림 | 법령·자료 | 분야별정보 | 소개

계란 안전관리는 강화하고 규제는 합리적으로 개선

부적합 식육육안을 식품 원료로 사용하거나 판매한 경우 행정처분을 강화하는 것을 주요 내용으로 하는 「축산물 위생관리법 시행규칙」 개정안 입법예고

식품·의약품 수송지원정보

Food and Drug Regulations in Korea

알려드립니다

방사능안전관리정보

2016년 업무보고

식약처와 함께하기

알려드립니다

입법/행정예고 | 제·개정고시 | 통계자료 | 홍보자료

마약류 관리에 관한 법률 시행규칙 일부개정령안 ... 2016-10-20

의약품 등의 허가 등에 관한 수수료 규정 일부개정 ... 2016-10-18

한약(생약)재배의 생분포파일 설정 가이드라인 ... 2016-10-18

우유건강기능식품 제조기준 일부개정고시(안) 행정 ... 2016-10-18

축산물 위생관리법 시행규칙 일부개정령안 입법예고 ... 2016-10-14

모범업소 지정 및 운영관리 규정 일부개정령안(안) ... 2016-10-13

전자민원창구

식품 | 수입식품 | 의약품

의료기기 | 화장품 | 신고센터

종합상담센터 1577-1255

화상/문란 상담예약

식품안전정보포털

식품안전소식지신고센터

국민안전 1399

우유인재채용 시스템

식품의약품안전처

2016 부처 업무보고

연구관리시스템

바이오IT플랫폼

나의 행복, 대한민국

전체 보기

개인정보처리방침 | 저작권정책 | 부처별전화번호 | 도량형주소

187-159 충청북도 청주시 오송읍 오송생명2로 187 식품의약품안전처

Copyright © By Ministry of Food and Drug Safety. All Rights Reserved | 통합상담센터 1577-1255 | 팩스: (서울)02-2640-5020, (지방) 043-719-1100

Home | Sitemap | Korean

AGRO-LIVESTOCK AND FISHERIES | DRUGS | BIO & COSMETICS | MEDICAL DEVICES | ABOUT MFDS | MFDS NEWS

Y OF ND DRUG SAFETY

Drugs, Healthy People

REGULATIONS

IKJ Food hygiene scores now compulsory (2016-10-18)

lating Act (Northern Ireland) 2016 and linked regulations are now in force, so all food display their score from the Food Hygiene Rating Scheme. Ratings range from means the food hygiene standards are very good, down to #39;0' where urgent issary. The scheme has been introduced to help people make informed choices when out.

Pesticide Tolerances - A Rule by the Environmental Protection Agency (... Oct 20, 2016

Eport 2015-2016 (2016-10-17) Oct 19, 2016

on future food regulation (2016-10-17) Oct 19, 2016

to stop prescribing gluten-free food (2016-10-17) Oct 19, 2016

[FOOD]
Foods Labelling Standards

[AGRO-LIVESTOCK AND FISHERIES]
Import Policy for Livestock Pro...

[DRUGS]
Korean Pharmacopoeia(Tenth E...

[BIO & COSMETICS]
Regulation on Approval and No...

[MEDICAL DEVICES]
Regulations on Labelling, etc. o...

arning Center

Excellence in the Korean Pharmaceutical Industry

NIFDS

Information for Multicultural Family

and 187, Osongseongmyeong 2-ro, Osong-eup, Heungdeok-gu, Cheongju-si, Chungcheongbuk-do, Republic of Korea 28159

Copyright Ministry of Food and Drug Safety. All Rights Reserved. Tel : +82-43-719-1504

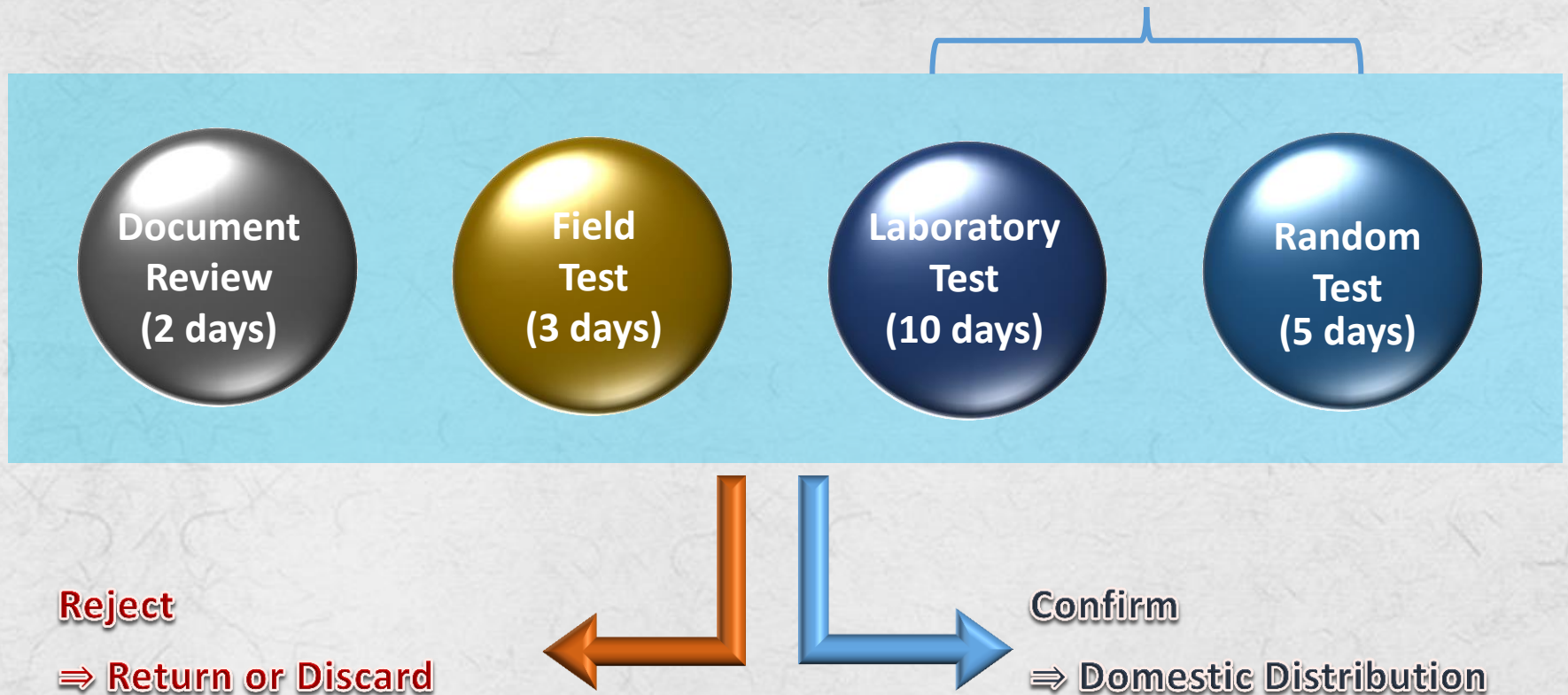
Inspection of Imported Foods

Inspection of Imported Foods

<http://mfds.go.kr/index.do?x=0&searchkey=title:contents&mid=702&searchword=수입식품&y=0&pageNo=1&seq=492&sitecode=1&cmd=v>

Inspections

Physical • Chemical •
Microbiological Test



Details on Test Types

Document Review

- Once **processed food** confirms with standard as a result of Laboratory Test, the next import of the same product goes to Document Review

Field Test

- Once **agricultural produce** confirms with standard as a result of Laboratory Test, the next import of the same product goes to Sensory Test

Laboratory Test

- **The first import** of a product
- The product with **rejection history** or **risk information** from various source
- In case that standards or specification has been amended

Random Test

- Products chosen by MFDS electronic system according to annual **random sampling plan**

Main check points of Inspection

- Verifying **constituents, manufacturing process, usage, labeling, taste, color, appearance, standards and specifications** for food products to be imported
- ✓ **Whether the product meets the standards or specifications according to Food Code, Food Additives Code**
- ✓ **Whether the manufacturing methods are appropriate**
- ✓ **Whether the product has a proper combination of food constituents**
- ✓ **Whether the required certificates were filed and correct(GMO, BSE, etc)**
- ✓ **Whether the product got rotten or deteriorated**
- ✓ **Whether the product is properly Labeled**
- ✓ **Whether the product has any exaggerated advertisement/package or misleading labeling**
- ✓ **..., etc**

Field Sampling

1st STEP

수입 화물/통관 진행정보 상세조회

입항보고서조회 | 화물인쇄

화물관리번호	07SNKA7338-0085-	상태	반출완료	선박국적	CY.아일랜드
M B/L - H B/L	SNKOSSES7330000-	대리점		SINOKOR MERCHANT MARINE C	
선(항공사) 사	SINOKOR MERCHANT MARINE CO., LTD	구분	수입화물	적재항	Qingdao, CN
선(항) 열	SEA SPACE	포장종수	15,000GT	B/L타입	\$
영역항	부산항	입항일자	2007/08/22	양적	750,000
종명	FRESH GARLIC	관세번호	CNTR 2000	총중량	307,500.0KGS
동관전번	수리통보	2007/08/29	관세대상지정내역		CRLU1109506
반출일자/출발지	발차	739E	선고지명개산세		

컨테이너 번호

컨테이너번호	컨테이너번호
CRLU1109506	FSCUS600563
GESU922932	SKRU8200396
SKRU8200539	SKRU8200631
SKRU8201047	SKRU8300712
SKRU8400385	SKRU8400684
SKRU8400619	SKRU8400769
SKRU8500140	THRU8254977
THRU829471	

- check item information

2nd STEP



- move to the container yard

3rd STEP



- check container inside

6th STEP



- check item list and send

5th STEP



- sampling for lab-test

4th STEP



- item check by regulation

Imported Food Information Site

<http://www.foodsafetykorea.go.kr>

[통합민원상담서비스](#) [데이터활용서비스](#) [우리회사 안전관리서비스](#) [밥 기업회원가입](#) [출개원회원가입](#) [로그인](#) [사이트맵](#)

**식품의약품안전처**
식품안전정보포털

인기검색어: 식품안전, 식품제조보고, GMO

[홈](#) [식품위생정보](#) [이슈와 뉴스](#) [안전한 식생활](#) [건강한 식생활](#) [오감만족 식단](#) [전문정보관](#) [공감타이거](#)

구입하려는 식품정보 궁금하세요?
식품안전관리인증(HACCP)은 안전하고 깨끗한 제품에 부여됩니다.

우리동네 음식점은 안전할까?
내 주변 음식점, 학교급식정보 등을 한 눈에 살펴보세요.

이런 식품 드시지 마세요

부정·불량식품 신고해주세요
국번없이 **1399**

[최신 식품안전 이슈](#) | [위해예보 조기경보](#)

내 건강에 도움되는 정보들
내게 필요한 상해주기별 정보와 건강, 다이어트, 통계정보들... 지금 찾아보세요.

임산부

영유아

어린이

청소년

노인

식품안전 통계정보

건강기능식품 구매정보

운동칼로리 계산기

칼로리사전

식품독 예방준비 예측지도

BMI 계산기

외식영양성분 지표집

유리화교 급식식단

온라인 민원신청
식품영업관련 전자민원

각종 인허가, 증명신청, 신고 등을 인터넷으로 신청 가능합니다.
[신청하기](#)

식품 산업체 지원 서비스
우리회사 안전관리 서비스

우리회사의 인허가 및 인증정보와 제품생산, 교육이수, 시설정보 등을 조회하고 관리합니다.
[이용하기](#)

식품안전 정보 공개
OpenAPI

식품안전 관련 데이터를 누구나 자유롭게 활용할 수 있도록 제공하고 있습니다.
[이용하기](#)

시험기관 성적서 조회
시험성적 위·변조 확인

민간시험 검사기관에서 발급한 성적서의 진위 여부를 확인 할 수 있습니다.
[조회하기](#)

[이용안내](#) | [개인정보처리방침](#) | [포털이용관련 질의응답](#) | [관련사이트](#) | [공지사항](#) | [정보오류 신고](#) | [원격지원서비스](#)

관계 부처 사이트 바로가기 [\[식품의약품안전처\]](#)

 **식품의약품안전처**

위:20199 충청북도 청주시 흥덕구 오송읍 오송생명2로 107 오송보건의료행정타운 식품의약품안전처
Copyright © Ministry of Food and Drug Safety. All Rights Reserved.
소버라이징(식품안전정보포털): 국번없이 1399, 종합민원센터: 1577-1255, 시스템 문의: 1099-5590

 **식품안전**

New Framework : Special Act on Imported Food Safety Control

Increasing Imported Food

한국경제

2014년 06월 16일 월요일 A23면 경제

세네갈산 갈치·베트남산 주꾸미

수입식품, 대형마트 판매 50% 육박

〈생선·과일〉

수입 식품이 한국 소비자들의 식탁을 빠르게 점령하고 있다. 국산 대비 가격 경쟁력을 앞세운 수산물과 과일은 물론 맥주·과자 등 국산보다 비싼 가공식품까지 수입 식품의 시장점유율이 높아지고 있다.

자유무역협정(FTA)으로 수입 식품이 가격 경쟁력을 갖게 된 데다 소비자들의 입맛도 다양해지고 있어 수입 식품의 공세는 더욱 거세질 전망이다.

이마트가 올 들어 지난달까지 수산물 매출을 원산지별로 집계한 결과 수입 수산물이 44.8%를 차지했다. 노르웨이산 연어, 미국산 랍스터, 베트남산 주꾸미 등이 인기를 끌며 수입 수산물 매출이 늘었다는 설명이다. 이마트는 전 세계 60여개국에서 수산물을 수입, 판매하고 있다.

과거에는 고등어 갈치 등은 국산, 연어 랍스터 등은 해외산으로 시장이 구분됐다. 그러나 최근엔 국산 일색이던 품목에서까지 국산과 수입이 경합을 벌이고 있다. 지난달 롯데마트에서는 갈치 매출 중 수입 갈치의 비중이 51.6%를 차지해 국산보다 높았다. 수입 수산물의 인기는 통계에서도 확인할 수 있다. 관세청에 따르면 올 들어 지난달까지 수산물 수입량은 45만5614t으로 지난해 같은 기간보다 6.2% 증가했다.



식탁 점령해 가는 수입식품

이마트, 수입 수산물 45%
올들어 과일도 40% 돌파
과자·맥주도 수입 급증

FTA로 가격 낮아지고
소비자 입맛도 변화

수입 과일 역시 올 들어 지난달까지 이마트 과일 매출의 41.3%에 이를 정도로 비중이 높아졌다. 이마트 과일 매출에서 수입 과일의 비중은 2012년 36.7%에서 지난해 36.2%로 다소 낮아졌으나 올 들어 다시 높아져 40%를 돌파했다.

뿐만 아니라 세계적인 기후변화로 수산물 가격 변동성이 높아지고 있다"며 "질 좋은 상품을 안정적으로 확보하기 위해 수입 지역과 경로를 다변화하고 있다"고 말했다.

소비자의 입맛 변화도 수입 식품의 점유율이 높아지는 요인 중 하나다. 해외여행이나 유학 또는 다른 여러 경로로 외국 식품을 맛본 소비자들이 수입 식품을 선호하고 있는 것이다. 업계에서는 최근 수입 맥주와 수입 과자 매출이 증가한 원인 중 하나로 입맛 변화를 꼽는다.

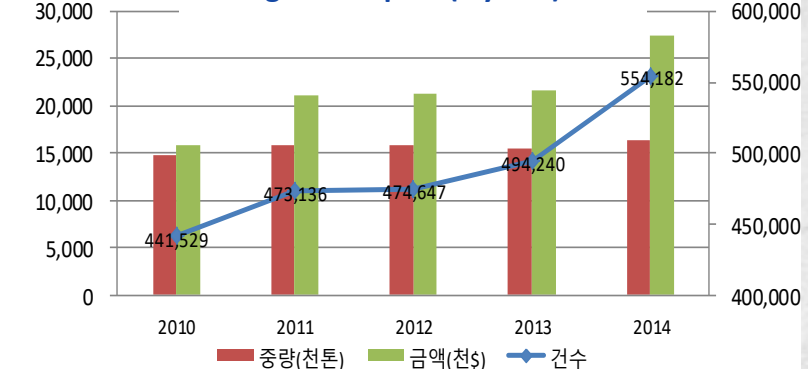
올 들어 지난달까지 롯데마트 맥주 매출에서 수입 맥주는 26.7%를 차지했다. 롯데마트의 수입 맥주 점유율은 2011년 9.2%에서 2012년 10.8%, 2013년 16.3%로 급격히 높아지고 있다. 롯데마트에서 올 들어 국산 맥주 매출은 지난해 같은 기간보다 4.5% 감소한 반면 수입 맥주 매출은 34.6% 급증했다.

과일 역시 망고 자몽 등 국내에서는 재배량이 많지 않은 품목이 인기를 끌면서 수입 상품의 비중이 높아지고 있다. 더구나 한국이 미국 유럽연합(EU) 등 전 세계 국내총생산(GDP)의 80%에 이르는 국가들과 FTA를 맺으면서 각종 농수산물들보다 한 값에 들어올 수 있게 됐다.

이용호 롯데마트 생선 상품기획자는 "국내 어획량이 줄었음

중량(천톤)/금액(백만\$)

Changes in Import (5 years)



✓ Average annual increase for the last 5 years

☞ Case 5.8%, Weight 2.5%

✓ Decrease in self-sufficiency rate of food

☞ 56.9%('09) → 54.9%('10) → 45.3%('11)

유승호기자 usho@hankyung.com

High Concern over Imported Food

미국산 쇠고기, 동물용의약품 '질 파테 롤' 검출
(아시아뉴스통신=김하영 기자)

뉴스일자: 2013년 10월 11일 14시 09분



중국산 배추김치서 대장균 또 발견...판매금지

연합뉴스 | 기사입력 2013-12-02 19:15 | 최종수정 2013-12-03 08:55

식약처, 뉴질랜드산 수입치즈에서 식중독균 검출

중국어 '질산염 분유' 문제 일으켰던 폰테라사 '모짜렐라 치즈' 제품 모두 폐기

2013년 12월 26일 (목) 10:03:34

유승철 편집위원 cow242@beautyhankook.com



▲ 폰테라(Fonterra)사의 '모짜렐라(Mozzarella) 치즈' 및 폰테라사 뉴질랜드 현지 생산본인(사진=폰테라사 홈페이지)

(서울
시)
치즈

식약처 [뷰티한국] 꼬리가 길면 잡히는 법인가?

도도

회수글로별기업인 뉴질랜드 폰테라(Fonterra)사가 한국에 수출하고 있는 브랜드명 '모짜렐라

(Mozzarella) 치즈' 제품에서 대장균이 발견돼 한국 식약처로부터 불합격 통지를 받고 수출물량 전

Consumer's Perception of Food Safety in 2014

Overall Perception

73.8

Food around School

49.7

Imported Food

51.8

Eating-out

72.4

Manufactured & Distributed Food

78.2

Communal Food Service

78.5

Institutional Changes

Integration of laws regarding imported food safety control

Current (4 different laws)

- ✓ Food Sanitation Act
- ✓ Livestock Products Sanitary Control Act
- ✓ Functional Health Foods Act
- ✓ Act on the Prevention of Contagious Animal Diseases



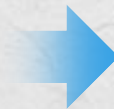
Special Act on Imported Food Safety Control

- ✓ Enhance consistency and efficiency in the administration of imported food
- ✓ Improve convenience in handling civil complaints

Changes in the imported food safety control system

Current

- ✓ Focus on border inspections



Special Act on Imported Food Safety Control

- ✓ Focus on inspections over all stages incl. pre-importation

Contents of the Act

8 Chapters and 47 articles

Ch 1 General Provisions

**Ch 5 Control of Distribution
Steps**

**Ch 2 Control of Steps
Prior to Importation**

**Ch 6 Administrative
Sanctions**

**Ch 3 Control of Importing
Business**

**Ch 7 Supplementary
Provisions**

**Ch 4 Control of Steps
In Customs Clearance**

Ch 8 Penalty Provisions

Ch 1 General Provisions

Art 1 Purpose

- To contribute to sound order in trade and to improving people's health by ensuring the safety of imported food, etc., promoting improvement in the quality thereof, and providing proper information

Ch 2 Control of Steps Prior To Importation

Art 5 Registration of Foreign Food Facilities

- A person who intends to import food, etc. or person who establishes and operates an foreign food facility shall register with the MFDS by not later than 7 days before filing an import declaration
- ✓ Matters prescribed by Ordinance of the Prime Minister, such as the name, location of, and food items shall be registered
- ✓ Any change occurred in registered matters shall be registered
- ✓ Where needed to further verify any matter, necessary data may be requested
- ✓ Registration shall be renewed every two years
- Where registering by deceit or other unjust means, or failing to providing additional data, etc, an import declaration may be rejected

Ch 2 Control of Steps Prior To Importation

Art 6 On-Site Inspection of Foreign Food Facilities

- The MFDS may conduct an on-site inspection of an foreign food facility through prior consultation with its government or the foreign food facility
- ✓ Where deemed that an on-site inspection is necessary to prevent risk in imported food, etc., and that it is necessary to confirm facts about safety information on imported food, etc. collected at home and abroad
- Where refusing an on-site inspection or being likely for a hazard to occur in imported food as a result of the on-site inspection, the importation may be suspended
- ✓ Where identifying any cause of a problem and suggesting improvements, the suspension of importation may be revoked

Ch 2 Control of Steps Prior To Importation

Art 7 Registration, etc. of Good Importation Facilities

- Any person who has inspected the status of sanitation management of a foreign food facility according to standards set by the MFDS may register such facility as a good importation facility
 - ✓ The MFDS may conduct an on-site inspection in order to verify whether meeting the standards
 - ✓ The period of validity of the registration shall be 3 years
 - ✓ Clearance at border may be expedited, and the registration may be published
- Where falling under any of the following, the registration may be revoked
 - ✓ Where registering by deceit or other unjust means
 - ✓ Where subject to an administrative disposition for suspension of business for at least 2 months, etc

Ch 2 Control of Steps Prior To Importation

Art 8 Registration, etc. of Good Importation Facilities

- Any person who has inspected the status of sanitation management of a foreign food facility according to standards set by the MFDS may register such facility as a good importation facility
 - ✓ The MFDS may conduct an on-site inspection in order to verify whether meeting the standards
 - ✓ The period of validity of the registration shall be 3 years
 - ✓ Clearance at border may be expedited, and the registration may be published
- Where falling under any of the following, the registration may be revoked
 - ✓ Where registering by deceit or other unjust means
 - ✓ Where failing to observe matters prescribed by Ordinance of the Prime Minister

Ch 2 Control of Steps Prior To Importation

Art 9 Entrustment of On-Site Inspection, etc.

- Where necessary to efficiently conduct on-site inspections referred to in Art 6 through 8 and sanitation assessment provided for in Art 18 (2), the MFDS may entrust them to an foreign food sanitation assessment institution
- The institution shall report the results thereof and submit relevant documents to the MFDS, after conducting an on-site inspection, etc.

Ch 2 Control of Steps Prior To Importation

Art 10 Designation of Foreign Food Sanitation Assessment Institution, etc.

- The MFDS may designate an institution that can professionally conduct assessments to efficiently conduct affairs, such as on-site inspections, referred to in Art 9
- ✓ The period of validity on the designation shall be 3 years, and may be extended once only to an extent not exceeding 1 year
- ✓ Where necessary to ensure the adequacy and reliability of assessments of the institution, the MFDS may require a necessary report, inspect employees and relevant documents, etc.
- Where falling under any of the following, the designation may be revoked or corrections, etc. may be ordered
 - ✓ Where designated by deceit or other unjust means
 - ✓ Where preparing false documents related to assessments deliberately or by gross negligence, etc.

Ch 2 Control of Steps Prior To Importation

Art 11 Import Sanitation Assessment, etc. of Livestock Products

- The MFDS may conduct assessments on the actual conditions of livestock products sanitary control of the exporting country for each livestock product
 - ✓ Where requested to permit the importation from an exporting country
 - ✓ Where deemed necessary to reassess it according to changes in international standards, etc.
- Livestock products shall be imported from countries or regions for which the MFDS has determined and published the requirements for import sanitation
 - ✓ Where filing an import declaration, a sanitary certificate issued by an exporting country shall be attached according to the form on which it has consulted with the MFDS

Ch 2 Control of Steps Prior To Importation

Art 12 Registration, etc. of Foreign Establishments

- Any person who establishes and operates a foreign establishment shall register with the MFDS via the government of an exporting country before submitting an import declaration
- ✓ The same shall also apply where intending to change registered matters
- The MFDS may conduct an on-site inspection in order to examine and verify the registration

Ch 2 Control of Steps Prior To Importation

Art 13 Revocation, etc. of Registration of Foreign Establishments

- Where falling under any of the following, the MFDS may request to make corrections, or take necessary measures, such as suspending the importation or revoking the registration
 - ✓ Where obtaining registration by deceit or other unjust means
 - ✓ Where failing to register a change or registering it by deceit
 - ✓ Where refusing on-site inspection or found inappropriate
 - ✓ Where seriously violating requirements for import sanitation, etc.
- After implementing corrective and preventive measures, and submitting the results via the exporting country, the suspension of importation may be ceased or the registration may be allowed again

Foreign food facility registration system

- A person who intends to import, etc. into the Republic of Korea or a person who establishes and operates a foreign food facility shall register matters prescribed by Ordinance of the Prime Minister (e.g. name, location, manufactured items), with the Minister of Food and Drug Safety by no later than seven days before filing an import declaration.
- ★ Where the person has not registered or has registered by deceit, his/her import declaration shall be revoked

👉 Foreign food facility: a facility (including a ship in which seafood is produced or processed) that is located overseas and engages in the production, manufacturing, processing, packaging, or storage of imported food, etc. (except livestock products)

Foreign food facility registration system

- The person concerned shall file an application for registration **via an online computer system or email (fax)** and be notified of the completion of registration (a registration code provided) after any omission in registered information, etc. is reviewed.

- ☞ The registration of a foreign food facility is completed once a person, either a foreign manufacturer or an importer, registers his/her facility one time
- ☞ The foreign food facility registration system was developed in Dec 2015.
“impfood.mfds.go.kr” or “ from.mfds.go.kr”

- **Registered information** consists of **basic ten items**.

: Name, location, representative, type of business, manufacture items, whether HACCP is applied, etc.

Enquiry Point



For importing other foods

Food Import Policy Division

- ***Tel : 82-43-719-2159***
- ***Fax : 82-43-719-2150***

Thank You!



Ministry of Food and
Drug Safety